

AT&T Dedicated Internet (ADI)

What is AT&T Dedicated Internet (ADI)?

ADI is an internet access service that combines a dedicated connection with symmetrical bandwidth (same download and upload speeds) and provides reliable, high-performance connectivity. AT&T Dedicated Internet includes 24x7 proactive monitoring and maintenance of the communications link between service locations and the AT&T network.

What can users do with dedicated internet?

- Support critical business applications
- Create a strong foundation for voice, video and cloud
- Use web browsers, web-based communications
- Access emerging cloud-based services
- Provide Wi-Fi services
- Provide remote access to their WAN

Ways customers might use ADI

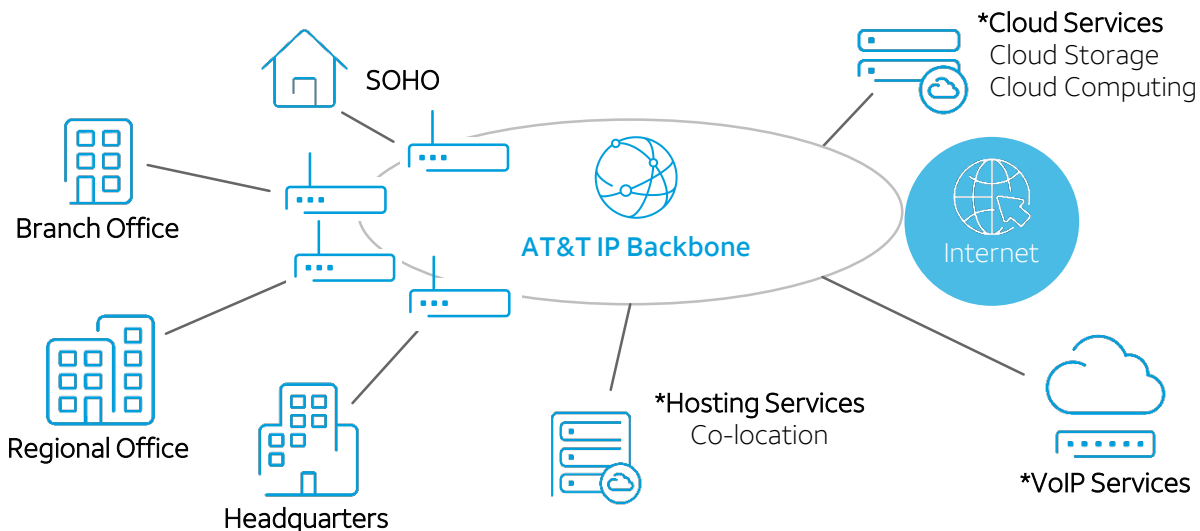
- Reliable Online Retail Presence
- Stock trades
- Fund Transfers
- Large Batch File Transfers
- Distance learning
- High demand web servers

How does ADI work?

Customers can use Ethernet or a private line to establish ADI access. ADI uses that access circuit to connect your Local Area Network (LAN) to the AT&T core backbone. The customer's internet traffic travels over this network.

Standard Features

- Identical upload and download speeds
- Proactive network monitoring and maintenance
- Industry leading performance and reliability SLAs
- Broad availability throughout the US
- Electronic servicing capabilities
- Speeds scale to 1Tbps



*Cloud, Hosting and VoIP are value-added services accessible with AT&T Dedicated Internet

Unmanaged & Managed ADI Services

Unmanaged Services

Solution provider or customer will:

- Provide the Customer Premises Equipment (CPE)
- Configure the CPE
- Install the CPE at customer location
- Monitor, manage and maintain the CPE

AT&T will:

- Provide and manage the port
- Deliver reliable, secure Internet access

What type of customer can benefit from Unmanaged ADI Services? Customers who want the power of a reliable network connection and also the responsibility of controlling their network flow and operations internally.

Managed Services

How is ADI managed? AT&T will manage the network security and performance by proactively monitoring network components. Optionally, AT&T can supply and manage the router and firewall.

Features:

- Point to point connection
- Benefits of IP networking
- Router management options
- Security features built into the IP network

AT&T will:

- Provide the Customer Premises Equipment (CPE)
- Configure & install CPE at customer location
- Monitor, manage and maintain the CPE
- Provide and manage the Port
- Deliver reliable, secure Internet access

What type of customer can benefit from Managed ADI Services? Customers who prefer complete, vendor-provided solutions. Allows customer to focus their attention and resources on their business rather than their network.

Use Cases

Financial



Class of Service

Financial firms transmitting stock quotes, corporate communications and sharing videos to distributed locations.

Healthcare



Mission Critical Applications

Hospitals using time-sensitive applications where strict reliability and performance guarantees are required.

Retail






Security

Retailers that need to meet regulatory compliance mandates such as Payment Card Industry (PCI) regulations.



Optional Features for AT&T Dedicated Internet

Customer Needs	<ul style="list-style-type: none"> • Optimize network capacity • Avoid investing in new voice equipment • Control costs • Increase and decrease the number of concurrent call channels as needed • Maintain call quality • Avoid toll charges 	 <p>IP Flexible Reach</p>	<p>IP Flexible Reach is a session Initiation Protocol (SIP) trunking service that delivers integrated access for IP PBX, TDM PBX or Key System environments,</p> <ul style="list-style-type: none"> • Integrates voice & data • Utilizes existing voice equipment • Calls carried on AT&T network • On-net calls route within the IP network
	<ul style="list-style-type: none"> • Inbound & outbound email security • Maintain business operations in the event of an email server outage • No hardware or software to buy, manage, and maintain • Easy to use web-based administration and reporting 	 <p>AT&T Secure Email Gateway</p>	<p>AT&T Secure E-Mail Gateway Service helps protect against inbound threats and provides protection for customer outbound mail flow, while helping to address their business continuity needs.</p> <ul style="list-style-type: none"> • Threat classification of phish, spam and other malware • Threat protection for URLs and attachments • Continuity protection from email outages
	<ul style="list-style-type: none"> • Ability to prioritize traffic based upon the type of traffic or application & their performance requirements 	 <p>Class of Service</p>	<p>Class of Service allows customers to prioritize their traffic based upon the type of traffic or application and their performance requirements. There are 4 options:</p> <ul style="list-style-type: none"> • Option 1 – Real-time • Option 2 – Critical data applications • Option 3 – Standard Business data applications • Option 4 – General data applications
	<ul style="list-style-type: none"> • Ability to communicate via the internet • Avoid costly, time consuming re-installations & renumbering in future 	 <p>IP Addressing</p>	<p>Customers are assigned IP addresses in units of /29 (equivalent to 8 IP addresses of which 6 are useable) with each ADI circuit</p> <ul style="list-style-type: none"> • Provided IPs are static based • No charge for IP addresses • No charge for additional IP addresses • ADI is Dual Stack (IPv4/IPv6) ready

Add-On Services for AT&T Dedicated Internet

Customer wants to

- Encourage collaboration
- Simplify communications tools
- Handle voice, video, web, and messaging
- Minimize costs
- Scale quickly



AT&T
CollaborateSM

Cloud-based voice and collaboration for multiple devices and applications—all from one phone number.

- Smooth communication
- Optimized collaboration tools
- Easy expansion
- Cost-effective bundle price

- Secure internet access to web-based applications
- Protect against malware
- Comply with regulatory requirements
- Minimize costs



AT&T Cloud
WebSecurity
Service

Cloud-based web security for proactive protection. Near-real-time defense against malware and protection against malicious sites.

- Provides increased protection
- Assists with regulatory compliance
- Easy expansion
- Cost-effective bundle price

- Protect sensitive data
- Give access to customers, employees, and partners
- Tailor policies and enforce them
- Get help with management reports
- Identify trends
- Be proactive about cybersecurity
- Minimize investment



AT&T
Premises-
Based
Firewall

Premises-based firewall help defend against malware and cyberattacks. Fully managed and monitored, including security reporting, stateful inspection, DMZ, and extranet support.

- Network perimeter protection
- Policies enforced by AT&T
- Cost-effective bundle price

- Defend against Distributed Denial of Service (DDoS) attacks
- Protect revenue, productivity, and brand image
- Call a trusted advisor who can help
- Prevent business disruption



AT&T
Reactive
DDoS Defense

Customer-activated, cloud-based mitigation service to scrub attack traffic, then forwards valid traffic to the attacked server.

- Rapid response
- Emergency plan for a DDoS attack
- Helps reduce loss exposure
- Cost-effective bundle price

- Stay competitive
- Offer Wi-Fi connectivity to employees and customers
- Provide highly-secure internet access
- Separate public and private traffic
- View reports and analytics



AT&T Wi-Fi
Enterprise

Highly-secure on-premises Wi-Fi that separates public and private traffic through a one-port connection.

- Connect multiple devices
- 2,000 square-foot coverage
- Cost-effective bundle price
- Customer/employee traffic remains separate and highly-secure

