

Process Cockpit

EPM Solution Accelerator



Infor EPM – Process Cockpit

Vision

Infor d/EPM solution accelerator, which

- ✓ enables **the customer** to execute **processes** in a **managed** way
- ✓ providing **transparency** about the status and results of process executions
- ✓ enables the user to **act** in a **self-employed manor**

The solution accelerator should

- ✓ provide all required functions that a user can **fulfill their task**
- ✓ but **take away** all tasks a user should **not care of**



Overview of use cases

Main use cases covered by the solution accelerator “Process Cockpit” within a d/EPM application:



RAISE REQUESTS

- On-Demand or scheduled process requests
- Configurable for any d/EPM batch
- Processes can be configured individually



EXECUTION OF REQUESTS

- Execute on-demand requests
- Manage concurrency of requests
- Execute schedules via Infor OS



FEEDBACK

- Get current request status
- Receive process result
- See detail protocol for processes
- Get an overview of process requests

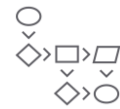


MAINTENANCE

- Add & manage available processes
- Permission configuration
- Concurrency & parameter settings
- Housekeeping actions

Key Facts & Add-ons

Standardized ICS solution for unifying any batch process execution in a EPM project, ready to run in cloud environments



Process Execution Framework

- Allows transparent process execution
- Allows parallel executions in managed manor



Infor Technology

- Usage of Infor d/EPM technology
- Usage of Infor OS technology
- Easy setup and integration in any existing d/EPM project



Data Wizard Component

- Allows power users to delete or copy data within any Infor OLAP hypercube



File Attachment Component

- Allows users to provide attachments to any batch job
- Sample process implementation included



Process Cockpit: Layers



Process Control Mechanism

Standardized database schema and process agent

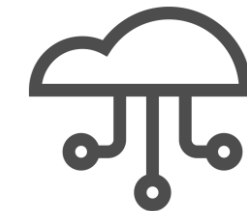
- DB is containing the configuration & execution history (EPM Stageing)
- Agent is managing the execution of process requests centrally (App. Engine, ION Workflow)



Web Frontend

Standardized set of Infor EPM application studio reports.

- Cockpit Report which allows on demand execution by users
- Overview of request history
- Protocols for previous executions

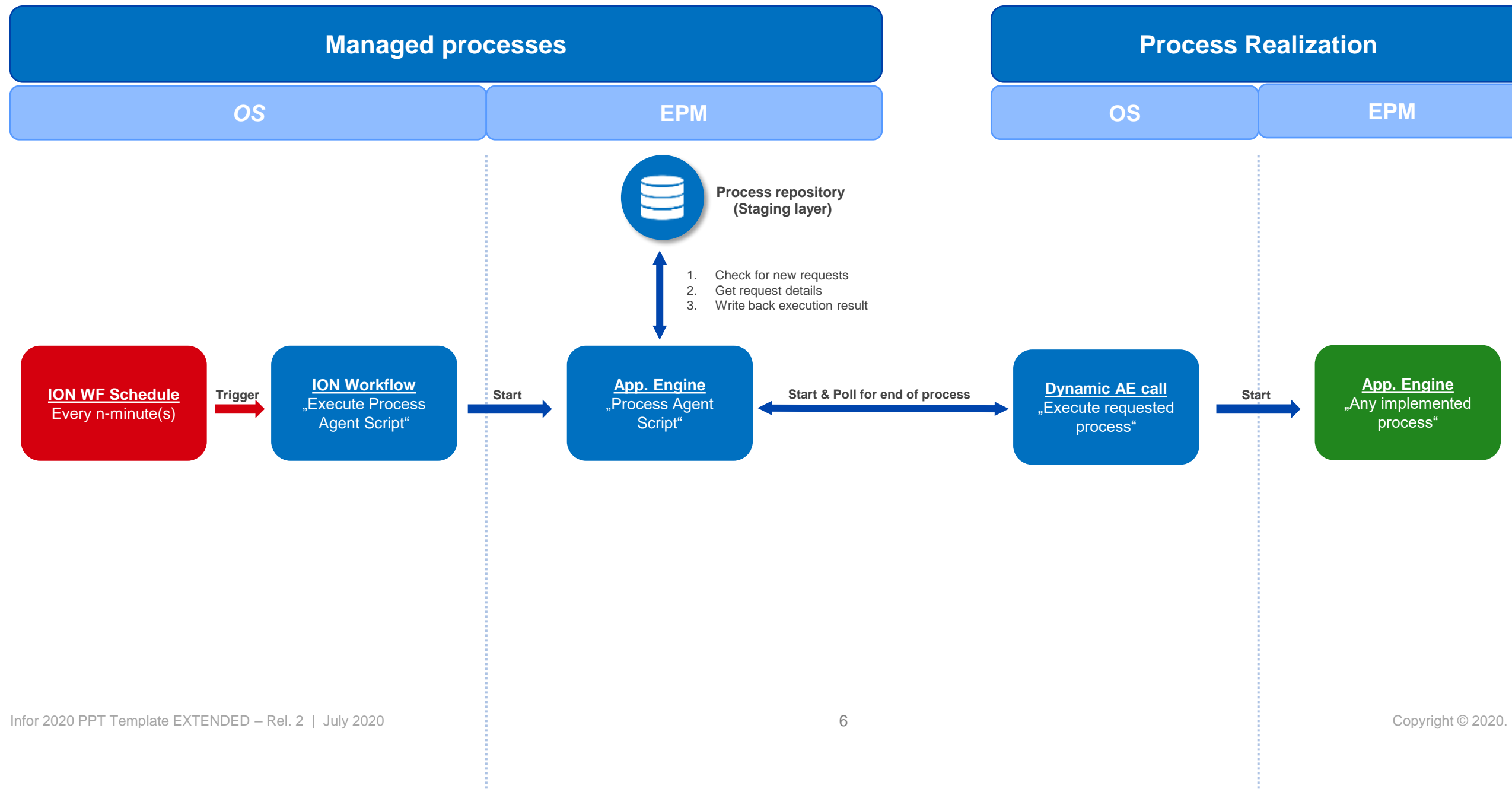


Process Realization

Implementation of custom processes for any EPM application

- App. Engine is mandatory as entry point
- Any other available technique (callable via App. Engine could be used)

Process Cockpit



Relevant actors

| Actor | Short Description | Key requirements |
|-----------------------|---|---|
| Business Users | Users who are working with the d/EPM application | <ul style="list-style-type: none">• Should not need a knowledge about the technical implementation of the application• On-Demand execution (“raise a request”) of any batch processes or imports, w/o the knowledge what other business users are requesting• Permission controlled parameter selection based on process context• Ability to attach files (e.g. input data) for “specific” processes• See status of a process execution• Get result about a process execution• See detail process protocol• Get advice in case of an exception / error, should be able to act in a self-employed manor |
| Business Admins | Users who are performing the business maintenance of the d/EPM applications / Power Users | <ul style="list-style-type: none">• Configuration of permissions for published processes for business user roles• See overview about all planned/requested, current running or already executed processes (e.g. filter options) at one place• Plan schedules for any process• Usage of data wizard components• “Business User” requirements are also applicable to “Business Admins” |
| Solution Admins | Users who are responsible for setup and system maintenance | <ul style="list-style-type: none">• Setup/Integration into any d/EPM application• Easily integrating new processes, independent of the “technique of realization”• Configuration of “concurrency rules” for processes• Integration of housekeeping rules• <i>OPTION: Same IA for MT and on-prem in the same way</i> |
| Technical/System User | Any technical/system users, e.g. process agent, scheduler, external applications, etc. | <ul style="list-style-type: none">• Responsible to handle any process requests, independent if on-demand or scheduled• Ability to create or execute process requests• Ability to query process results or detail protocols |

Extension: Process Task Groups

Administration Process Steps

Select Process

2000-PR_LOAD_DL_TO_STAGING_INCR

Q

Process Cockpit Application: Project

Process Execution Application: -

Available Functions

Process Type

| | | | |
|---|----|----------------------------|---|
| > | 1 | ExecuteFactMapping | + |
| > | 2 | ExecuteHierarchyMapping | + |
| > | 3 | ExecuteLoadQuery | + |
| > | 4 | ExecuteProcess | + |
| > | 5 | ExecuteScript | + |
| > | 6 | RunGroup | + |
| > | 7 | TableDataLoadQuery | + |
| > | 8 | TableDataLoadQueryAdditive | + |
| > | 9 | WorkflowStart | + |
| > | 10 | Test | + |

>

37

ExecuteScript | PR_LOAD_STAGING_PR_DIM_WBS

✓

>

38

ExecuteScript | PR_LOAD_STAGING_PR_DIM_Project

✓

>

39

ExecuteScript | PR_LOAD_STAGING_PR_DIM_PERIOD

✓

>

40

ExecuteLoadQuery | PR_CUBE_P100_ProjectBudget

✓

>

41

ExecuteLoadQuery | PR_CUBE_P100_ProjectCommitment

✓

>

42

ExecuteLoadQuery | PR_CUBE_P100_ProjectCost

✓

>

43

ExecuteLoadQuery | PR_CUBE_P110_WBSAttName

✓

>

44

ExecuteLoadQuery | PR_CUBE_P110_WBSAttStatus

✓

>

45

ExecuteHierarchyMapping | DIM_MAP_CM100

✓

>

46

ExecuteHierarchyMapping | DIM_MAP_FINANCIALYEAR

✓

>

47

ExecuteHierarchyMapping | DIM_MAP_LM100

✓

>

48

ExecuteHierarchyMapping | DIM_MAP_PM100

✓

>

49

ExecuteHierarchyMapping | DIM_MAP_PM110

✓

>

50

ExecuteHierarchyMapping | DIM_MAP_RA

✓

>

51

ExecuteHierarchyMapping | DIM_MAP_RCAT

✓

>

52

ExecuteHierarchyMapping | DIM_MAP_RID

✓

>

53

ExecuteHierarchyMapping | DIM_MAP_RM100

✓

>

54

ExecuteHierarchyMapping | DIM_MAP_VERSION

✓

>

55

ExecuteHierarchyMapping | DIM_MAP_VM100

✓

>

56

ExecuteHierarchyMapping | DIM_MAP_PROJECT

✓

>

57

ExecuteHierarchyMapping | DIM_MAP_WBS

✓

>

58

ExecuteHierarchyMapping | DIM_MAP_PERIOD

✓

>

59

ExecuteHierarchyMapping | DIM_MAP_ASSET

✓

>

60

ExecuteFactMapping | MAP_FACT_P100_ProjectCost

✓

>

61

ExecuteFactMapping | MAP_FACT_P100_ProjectBudget

✓

>

62

ExecuteFactMapping | MAP_FACT_P100_ProjectCommitment

✓

Variables of Process:

2000-PR_LOAD_DL_TO_STAGING_INCR | Step: 41 - ExecuteLoadQuery

| # | Variable | Value | |
|---|--------------|------------------------------------|--|
| 1 | TableName | PR_CUBE_P100_ProjectCommitment | |
| 2 | QueryName | Q_CUBE_P100_Fact_ProjectCommitment | |
| 3 | ClearData_TF | T | |

Page 1 of 1

100 Records per page



Infor EPM – Data Management & Modelling

Thank you!

Infor is a global leader in business cloud software specialized by industry.

Infor.com



Copyright © 2020. Infor. All Rights Reserved. Infor.com