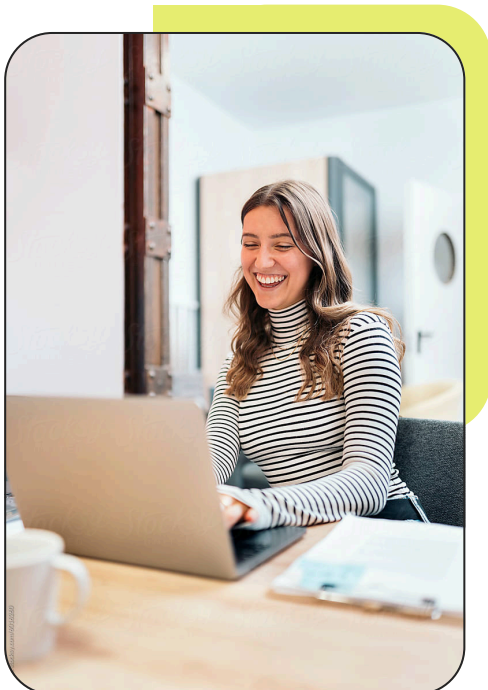
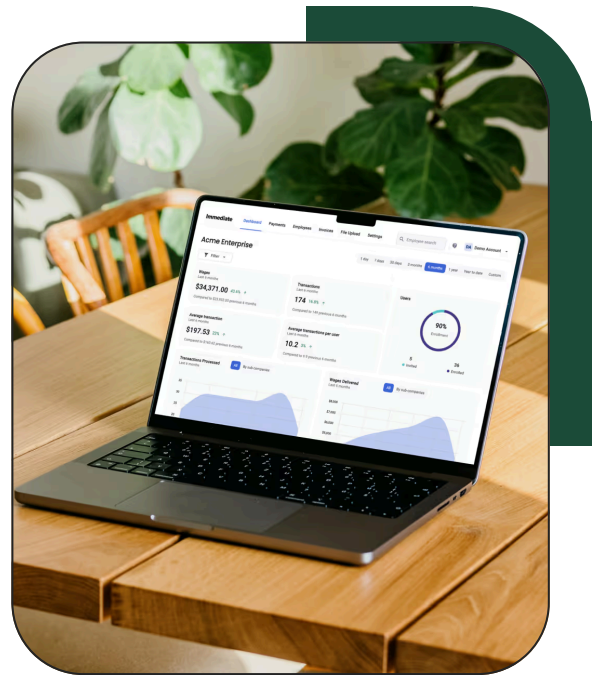


# Flex Payments

## Push payments to your team anytime

It should be easier to pay your employees! You need the flexibility to move money to your team without running an expensive off-cycle payroll process that still may not meet the requirements that you need.

With Immediate, you get more flexibility for when and how you can pay team members or how they pay you back. Immediate accesses employee information via payroll integration, which means you're able to rapidly push funds through our portal to the preferred payment method for your team member.



## How Flex Works

- Immediate integrates with your existing payroll system for easy access to employee profiles
- Add direct deposit information the first time you push a transfer to the employee
- The system will auto-reconcile the payment with the next standard check date