

ADP GlobalView Payroll Data Integration Guide: The 8 Most Popular Use Cases

How HR teams
streamline HR
processes with
custom-tailored
connectors.



2025

ADP
Marketplace
Partner



Flexspring 
Everything connects

Introduction

Welcome to next-generation HR data integration using data connectors from Flexspring.

- ✓ Flexspring is **ADP's top international partner for data integration** (2024 award winner).
- ✓ Gain **seamless, hands-free integration** between ADP GlobalView® Payroll and your HR systems.
- ✓ Improve your HR team's productivity by **avoiding double-data entry** between ADP GlobalView Payroll and your HR systems.
- ✓ **No internal IT resources** are needed to create a data integration. The experts at Flexspring handle all custom data mapping.
- ✓ Go beyond scheduled file transfer to gain **near real-time data sharing** via API-to-API connection.
- ✓ Gain **fast Integration** using turnkey or custom-tailored connectors.
- ✓ **Increase security** by reducing the creation of unnecessary user accounts, duplicate employee profiles, and people involved with manual data entry.

Flexspring focuses solely on HR data integration. It's all we do.

Flexspring integrations are true point-to-point integrations. They do not require manual interventions, do not store data, and meet enterprise-level security standards.

This **ADP GlobalView Payroll Data Integration Guide** walks you through the 8 most popular ADP GlobalView Payroll data integration use cases that we commonly see.

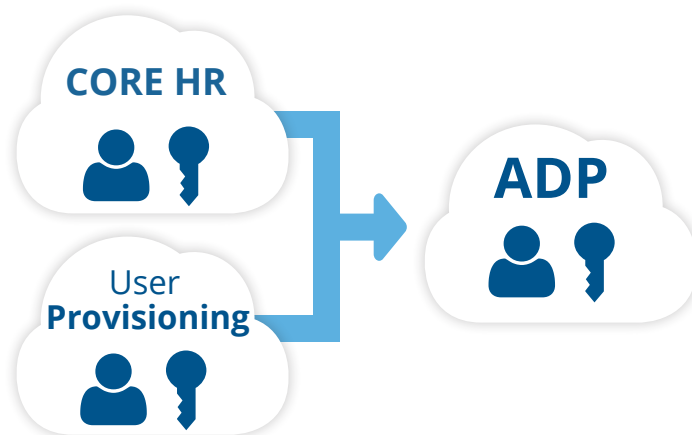


Step One: Choose your use case (or use cases)

Here are the 8 most popular use cases for integrating ADP GlobalView Payroll with your HR systems, including Time & Attendance, Benefits, Core HR, and Learning Management systems. With data integration from Flexspring, you only pay for the use case or use cases that you need. If you have a specific integration that is not covered in this guide, Flexspring can create a custom connector for your use case.

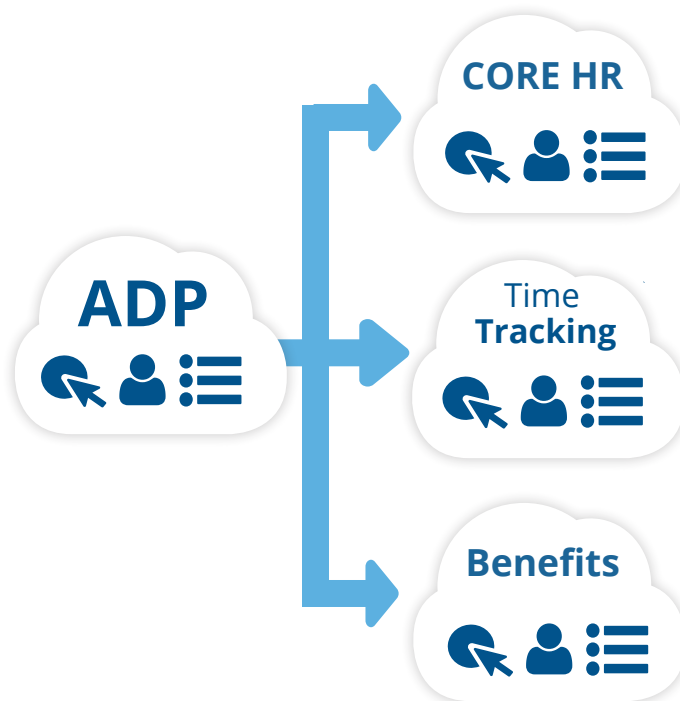
1 Automatically Create Users in ADP GlobalView Payroll from your Core HR or User Provisioning Systems.

Depending on the size of your company, you may have dozens of recruiters and 100s of hiring managers. This integration identifies if certain employees have hiring manager or recruiter roles in their employee profiles in your Core HR or User Provisioning systems, and then automatically creates user accounts with login and Single Sign-On credentials in ADP GlobalView Payroll.



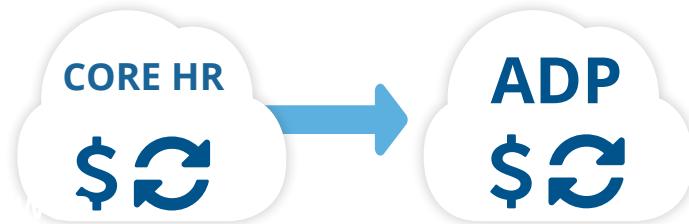
2 New Hires and Employee Updates from ADP GlobalView Payroll to your HR Systems (including Core HR, time tracking, and benefits platforms).

When a new employee is hired or an employee record is updated in ADP GlobalView Payroll, new hire and employee data, as well as changes such as transfers, terminations, and rehires, automatically sync in your HR systems with essential information needed to manage your workforce.



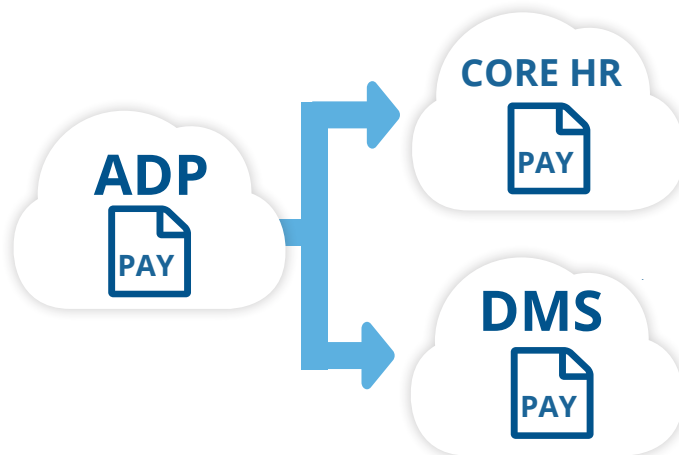
3 Recurring and One-Time Payments from Your Core HR System to ADP GlobalView Payroll.

Import any payments that are additional to an employee's standard compensation—whether recurring or one-time—for example, employee company stock shares, bonuses, or other monetary awards and imports the data into ADP GlobalView Payroll.



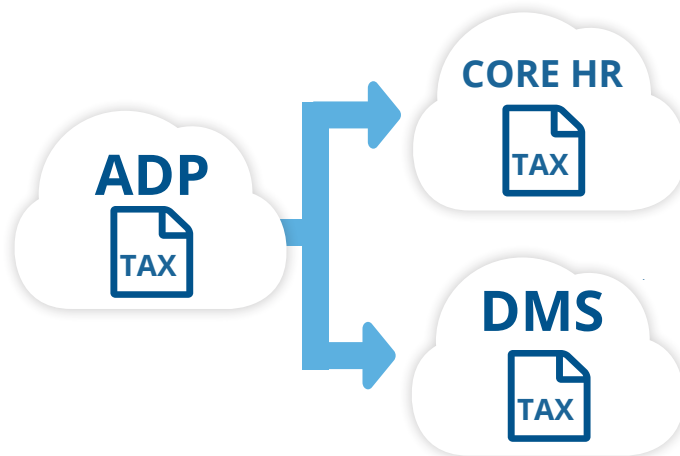
4 Payslips from ADP GlobalView Payroll to Your Core HR or Document Management System.

Retrieve an employee's latest Payslip in ADP GlobalView Payroll and send it to your Core HR or any document management system as a PDF. If needed, payslip data can be extracted from the PDF and mapped to individual fields within the Core HR system.



5 Tax Statements from ADP GlobalView Payroll to Your Core HR or Document Management System.

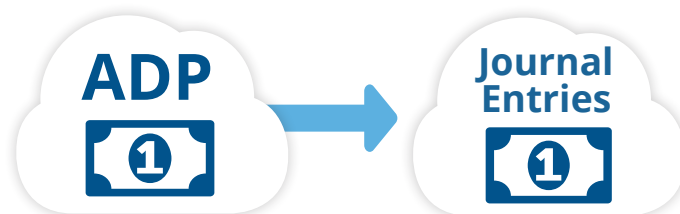
Retrieve an employee's end-of-year tax statements from ADP GlobalView Payroll and send them to your Core HR or any document management system as a PDF. If needed, tax data can be extracted from the PDF and mapped to individual fields within the Core HR system.



6 Payroll Data from ADP GlobalView Payroll to ERP Journal Entries.

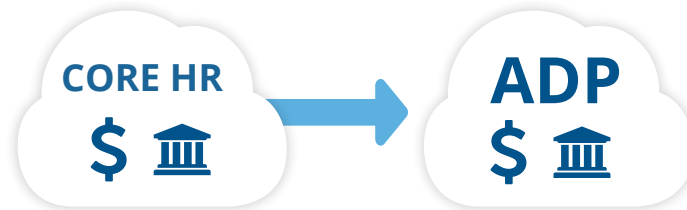
Extract weekly or bi-weekly payroll data from ADP GlobalView Payroll and automatically import the payroll data into your ERP. Specifically, this integration summarizes multiple lines of payroll data—for example, earnings, deductions, taxes, etc.—to create one journal entry per payroll run per subsidiary. Summary amounts can be grouped by department or location.

This use case comes in two flavors. The simple connector is for payrolls involving a single subsidiary, and the complex connector is for payrolls that map to multiple subsidiaries.



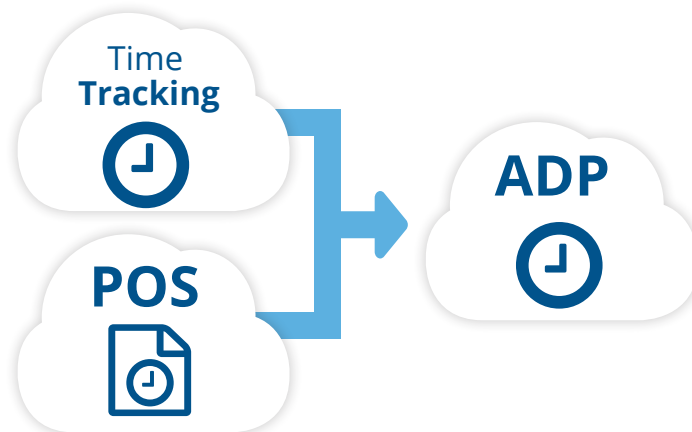
7 Direct Deposit from Core HR to ADP Global View.

Automatically transfer employee bank account details from the Core HR system to ADP GlobalView, ensuring that direct deposit information is always up to date. Whether adding new banking details or modifying existing ones, the integration ensures employees are paid accurately and on time, without manual data entry or delays.



8 Time and Attendance from Your Time Tracking Apps or POS to ADP GlobalView Payroll.

Eliminate error-prone data entry associated with transferring clock-in and clock-out data for weekly, bi-weekly, or daily timesheet reports from your time tracking apps or POS to ADP GlobalView Payroll. This integration provides hands-free, automated import of hourly summaries for workers from your time-tracking apps or POS systems to ADP GlobalView Payroll. This use case also manages vacation and leave time.





Other integration use cases are possible!

Flexspring does custom integration work for: One-Time Payments, Banking and Tax, Expense Management, Learning Management, Equity Systems, Background Checks, Assessments, and much more.

Reach out to sales@flexspring.com to discuss your specific needs.

Step Two: Understand Custom Integration

About Custom Integration



Features custom data mapping by Flexspring integration experts

Custom integration using an ADP GlobalView Payroll connector to your HR system from Flexspring is fast and relatively easy. The experts at Flexspring do all the data mapping to create a custom connector tailor-made for your business. No internal IT resources are needed to create or maintain your integration.

With custom connectors, the experts at Flexspring meet the unique integration needs of your business as well as match data field names—including custom fields—in any HR system and ADP GlobalView Payroll.

In any data integration, you must pull data out of one app and push it into another. The challenge is every HR system's APIs are different and have unique data formatting requirements.



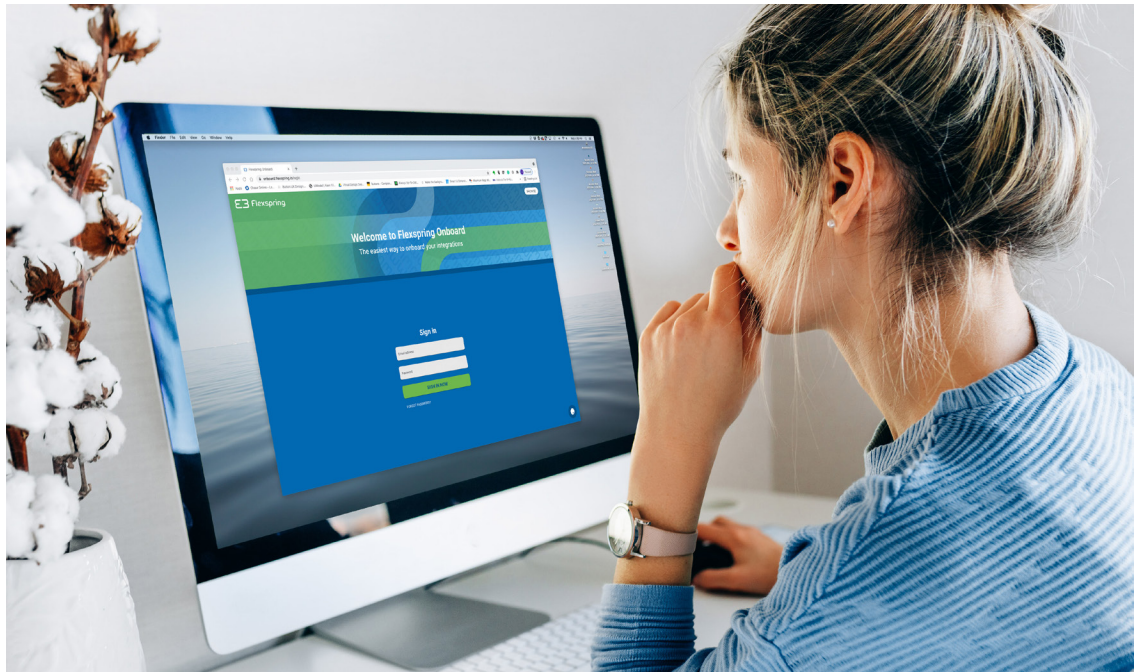
"HR departments should embrace the time-savings of data integration. Solving the double-data entry problem saves our HR resources hours monthly, freeing our teams to work on things of greater strategic benefit to our company. The cost-benefit analysis made the Flexspring connector cheaper to buy than build. And the implementation process was seamless and really easy."

- HRIS MANAGER, SOFTWARE COMPANY

Powered by Flexspring

Flexspring's integrations have a distinct advantage: the Flexspring iPaaS. Flexspring is an integration platform as a service (iPaaS) built from the ground up to meet the complex requirements of HR data integration. Simply, what SaaS does for software, Flexspring does for integration.

Flexspring is built for flexibility and speed. Leveraging integration templates, the experts at Flexspring can easily customize your integration to meet your unique business needs.



Flexspring integrations are also future-proof. The Flexspring support team can easily make changes in the future should new business rules, new payment codes, or new custom fields need to be added in ADP GlobalView Payroll or another HR system.

Flexspring integrations are true point-to-point integrations. They do not require manual interventions, do not store data (beyond temporary transaction logs), and meet enterprise-level security standards—including GDPR-compliance and SOC 2 certification by the AICPA (American Institute of Certified Public Accountants).

Step Three: Pricing

Custom connector pricing depends on several factors including scope, apps connected, number of fields, and complexity. Custom-tailored integration requires a custom quote from sales@flexspring.com

For questions about custom integration, contact sales@flexspring.com for assistance.

Fast Integration

A custom integration of the Flexspring Connector for ADP GlobalView Payroll with your HR system can be fully deployed in 10-12 weeks, depending on the complexity.

Guide last updated: 2025-06-12

Legal attribution: ADP GlobalView Payroll and the ADP GlobalView Payroll logo are trademarks of ADP, Inc. or its affiliates or licensors. The information in this document was prepared by Flexspring and Flexspring is solely responsible for its accuracy and completeness. ADP GlobalView Payroll makes no representation as to the accuracy or completeness of any information contained herein.

When experts connect data, you have peace of mind.



We love to talk about data integration. Please reach out with any questions.



YAN COURTOIS
CEO & Founding Partner
917.618.9536
yan.courtois@flexspring.com



BONNIE McMAHON
Chief Revenue Officer
508.641.0655
bonnie.mcmahon@flexspring.com



G2 Crowd rates Flexspring 4.5 out of 5 stars

